

# We'll Stand Together 2.8

For Solo Voice & SATB Choir

J. Sharkey

Arranged: D. McPherson

♩=70

Verse 1 (Solo or Unison)

Melody

D A6

D D

A D7

G Bm7



We'll stand as one, We'll stand to - ge - ther, We'll stand & fight through stor - my



wea - ther, We'll stand & fight till ev' - ry - thing's al - right, We'll stand to - ge - ther.



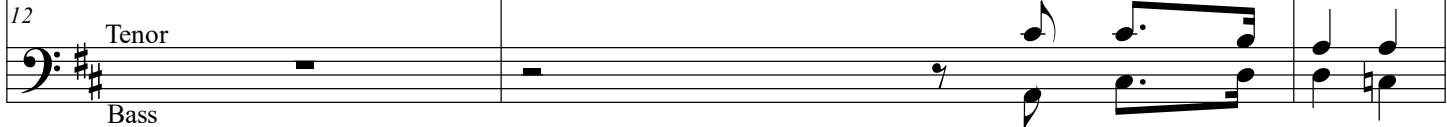
We'll live each day, As it comes our way, Come what may, ev' - ry sin - gle



day, We'll stand & fight till ev' - ry - thing's al - right, We'll stand to - geth - er.



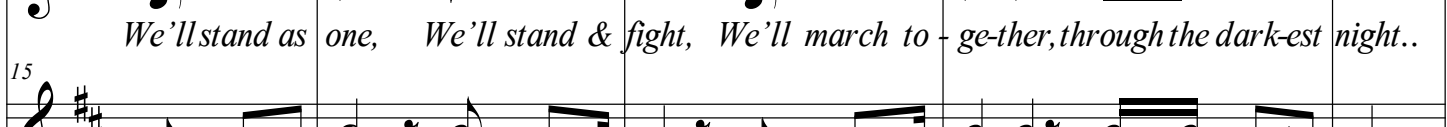
day, We'll stand & fight till ev' - ry - thing's al - right, We'll stand to - geth - er.



Bass



We'll stand as one, We'll stand & fight, We'll march to - ge - ther, through the dark - est night..



We'll stand as one, We'll stand & fight, We'll march to - ge - ther, through the dark - est night..



# We'll Stand Together 2.8

## Verse 3

Musical notation for Verse 3, measures 20-23. Chords: A6, D, A, D7, G, Bm7. Lyrics: We'll sing & dance, we'll live in peace, This is our re-lease, We'll stand to-

Musical notation for Verse 3, measures 24-27. Chords: A, D7, G, Bm7, A, F#m7, D, D7. Lyrics: geth - er, Come what may ev'-ry sing - le day We'll stand to - geth - er.

## Bridge 2

Musical notation for Bridge 2, measures 27-31. Chords: D7, G, Bm7, A, D7, GBm7, Em, A, A7. Lyrics: We'll stand as one, to see the ri-sing sun, We are strong, we've just be-gun....

Musical score for the first system (measures 32-35). It includes three staves: M (Melody), S/A (Soprano/Alto), and T/B (Tenor/Bass). The key signature is two sharps (F# and C#). The time signature is 7/8. Chords are indicated above the staff: F#m7, D, A, D, D7, G, Bm. The lyrics are: "If you feel a-lone, just pick up the phone, We'll sing to-gether, We'll sing to-gether." A "(Solo)" annotation is placed above the first measure of the M staff, and a "(Harmony)" annotation is placed above the T/B staff in the third measure.

Musical score for the second system (measures 36-39). It includes three staves: M (Melody), S/A (Soprano/Alto), and T/B (Tenor/Bass). The key signature is two sharps (F# and C#). The time signature is 7/8. Chords are indicated above the staff: A, D7, G, Bm, Em7, Bm, A7, A6, D. The lyrics are: "geth - er, We'll sing to-geth - er, We'll stand to-gether." The system concludes with a double bar line and repeat signs (//) in the M and S/A staves.